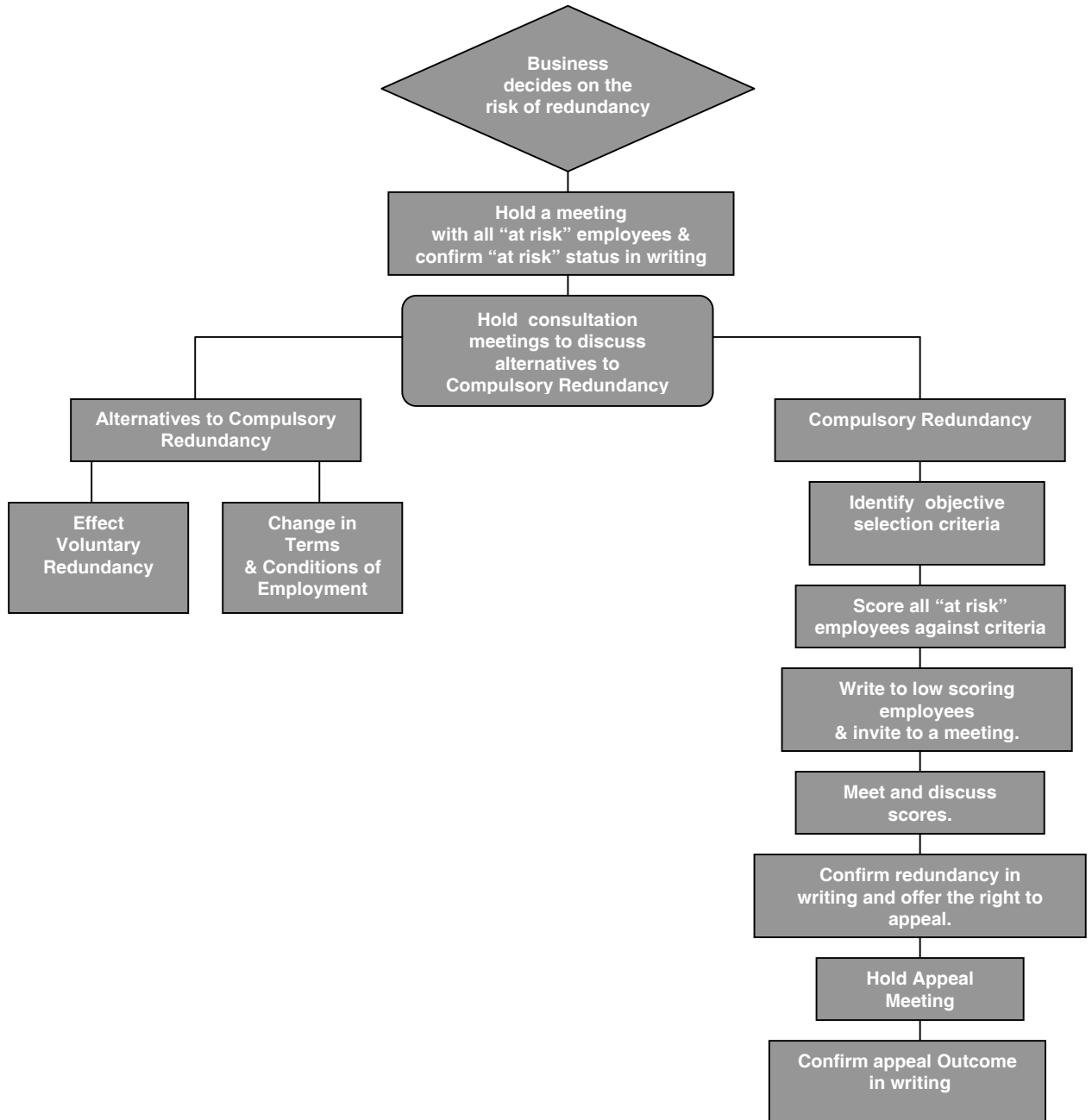


**Intro**

Being made redundant is one of the most stressful experiences many people will face in the work place. In our Redundancy Q&A Fact Sheet we provide brief answers to some of the standard questions asked by employees facing redundancy. Here we attempt to set out the standard steps employers need to take to follow the redundancy procedure, assuming that the employer intends to make less than 20 employees redundant within a 90 day period.

**Redundancy Stages**



Redundancy Flow Diagram